

IVAN L. DAVIS,
Musical Director,
LYCEUM THEATRE,
CHICAGO, ILL.

Viola

The Spectre Knight -

~~Violin~~



- Recit -

Musical notation on a single staff, starting with a treble clef, a key signature of one flat (B-flat), and a common time signature (C). The notation includes a series of notes with dynamic markings: *f* (forte) and *p* (piano). The notes are: F4 (quarter), G4 (quarter), A4 (quarter), Bb4 (quarter), C5 (quarter), Bb4 (quarter), A4 (quarter), G4 (quarter), F4 (quarter), E4 (quarter), D4 (quarter), C4 (quarter), B3 (quarter), A3 (quarter), G3 (quarter), F3 (quarter), E3 (quarter), D3 (quarter), C3 (quarter).

Musical notation on a single staff, starting with a treble clef, a key signature of one flat (B-flat), and a common time signature (C). The notation includes notes with dynamic markings: *f* (forte) and *p* (piano). The notes are: F4 (quarter), G4 (quarter), A4 (quarter), Bb4 (quarter), C5 (quarter), Bb4 (quarter), A4 (quarter), G4 (quarter), F4 (quarter), E4 (quarter), D4 (quarter), C4 (quarter), B3 (quarter), A3 (quarter), G3 (quarter), F3 (quarter), E3 (quarter), D3 (quarter), C3 (quarter).

Eight empty musical staves are provided for further notation.

IVAN L. DAVIS,
Musical Director,
LYCEUM THEATRE,
CHICAGO, ILL.

Viola

The Spectre Knight

No 2

- Rit -

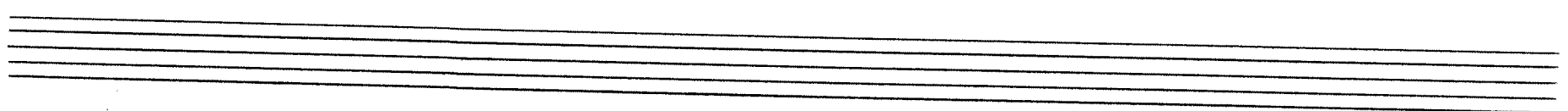
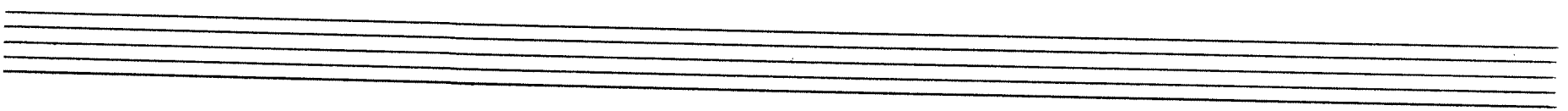
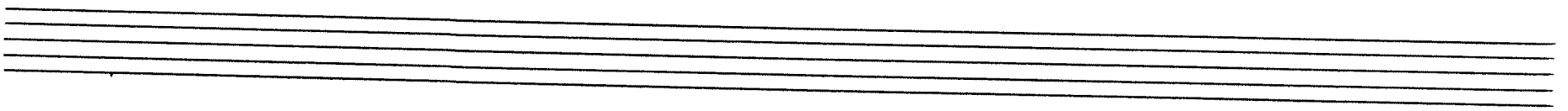
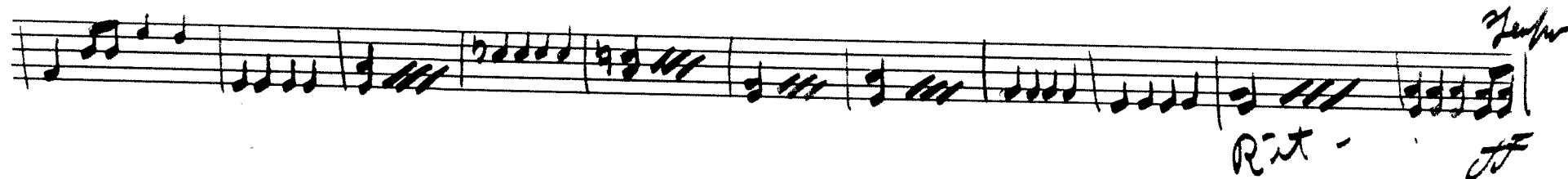
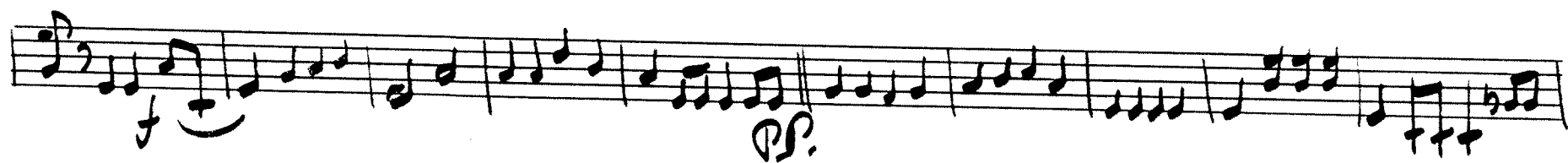
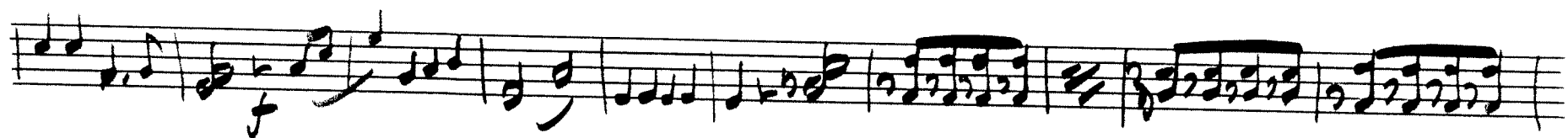
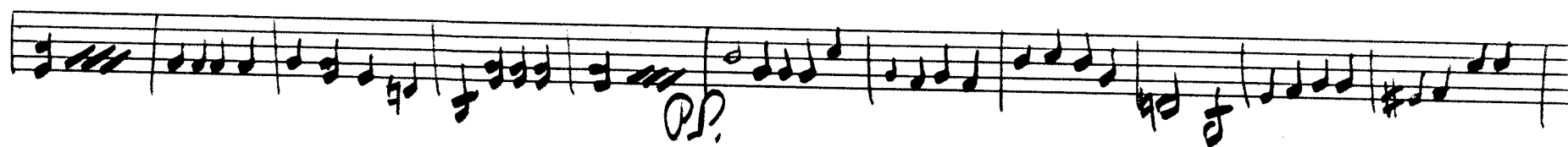
No 3 *all.*

IVAN L. DAVIS,
Musical Director,
LYCEUM THEATRE,
Chicago, Ill.

Viola

The Spectre Knight.

all mod.



The Spectre Knight -

IVAN L. DAVIS,
Musical Director,
LYCEUM THEATRE,
CHICAGO, ILL.

Viola.

mod. Valse

No. 6

f

Rit

pp

mf

f

pp

pp

f

f

Viola

The Spectre Knight

IVAN L. DAVIS,
Musical Director,
LYCEUM THEATRE,
CHICAGO, ILL.

Andt

No 7

Andt

2 3 4 5 6 7 8

Moder

Rit

stacc

Rit

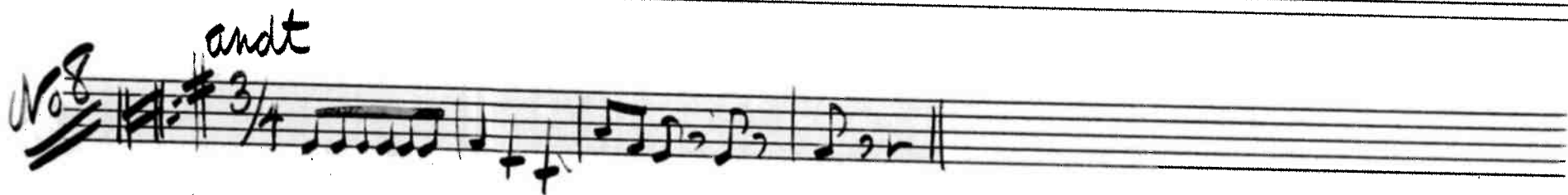
Rit

Viola

The Spectre Knight.

IVAN L. DAVIS,
Musical Director,
LYCEUM THEATRE,
CHICAGO, ILL.

and^t
No 8 $\frac{3}{4}$



molto



Pizz

Arco



Piu Vivo

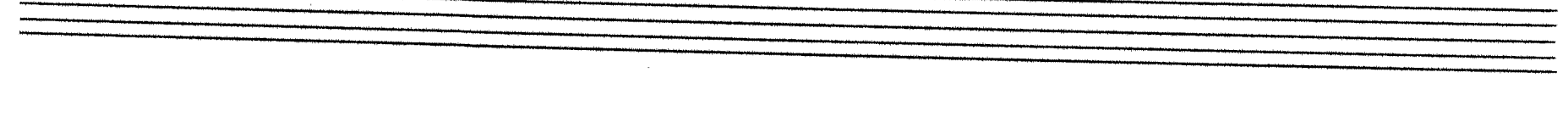
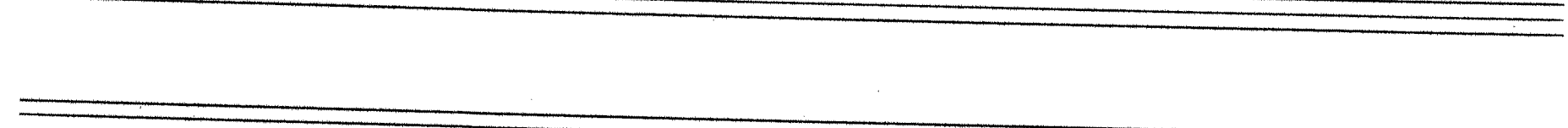
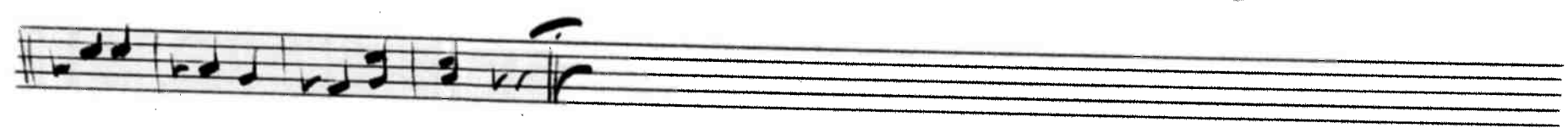


Collo Voce

Rall.



Piu Vivo

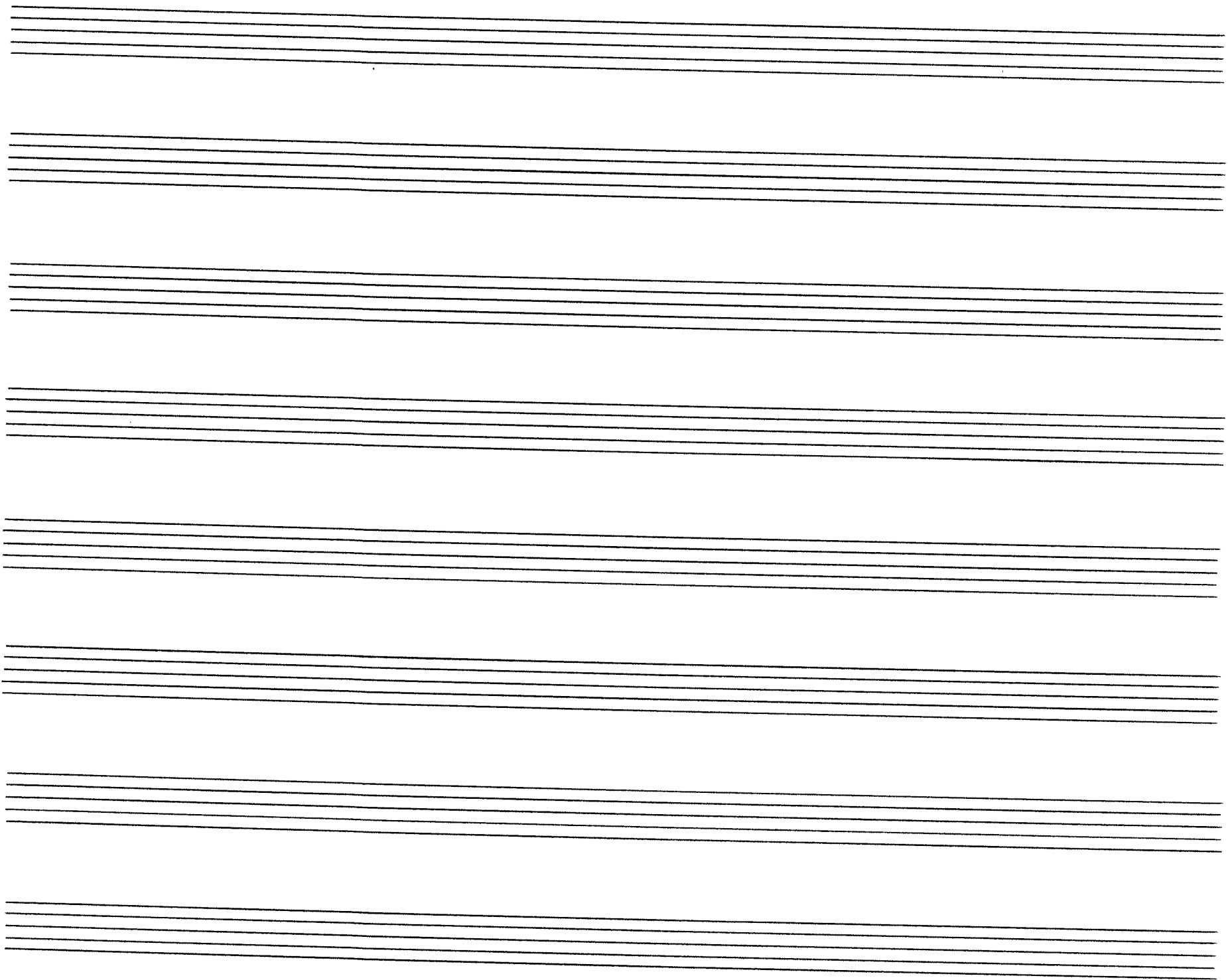
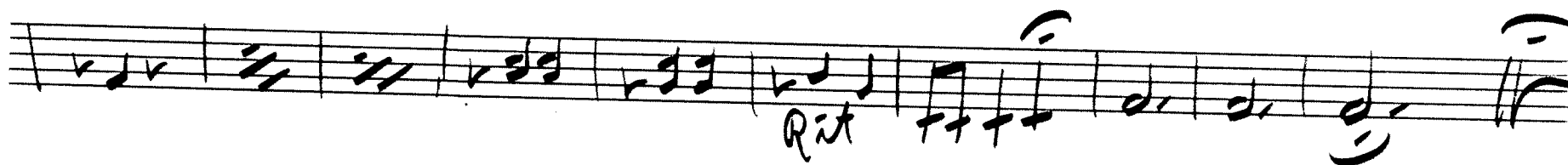
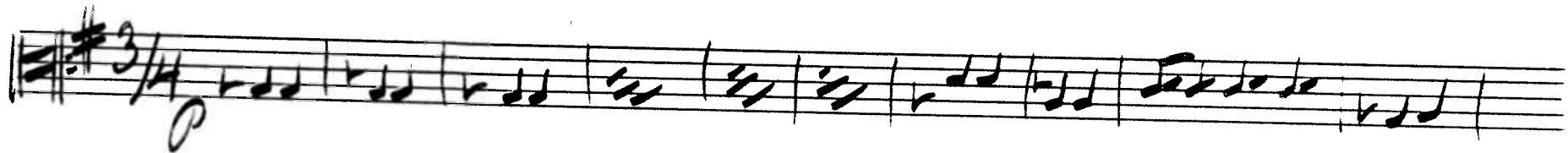


The Spectre Knight

IVAN L. DAVIS,
Musical Director,
LYCEUM THEATRE,
CHICAGO, ILL.

Viola

No 8^a



Viola

The Spectre Knight

IVAN L. DAVIS,
Musical Director,
LYCEUM THEATRE,
CHICAGO, ILL.

No 10

andte

p.p.

Bell Vinda

p.p.

p.p.

p.p.

p.p.

p.p.

Viola

The Spectre Knight

IVAN L. DAVIS,
Musical Director,
LYCEUM THEATRE,
CHICAGO, ILL.

Melodrama

~~*Viola*~~

andte con sordini

pp.

Celli solo

Viola pp.

Last time

Viola

The Spectre Knight

IVAN L. DAVIS,
Musical Director,
LYCEUM THEATRE,
CHICAGO, ILL.

No 12

Vivo

f

3 times then segue -

Vivo

f

Viola

The Spectre Knight.

IVAN L. DAVIS,
Musical Director,
LYCEUM THEATRE,
CHICAGO, ILL.

No. 6

Musical notation for No. 6, consisting of two staves. The first staff begins with a treble clef, a key signature of one sharp (F#), and a common time signature (C). The melody starts with a quarter rest, followed by a series of eighth and quarter notes. A dynamic marking of *pp* is placed below the first measure. A slur covers a group of notes in the fourth measure, with the word *rit* written below it. The second staff contains a few notes, likely a bass line or accompaniment.

No. 7

Musical notation for No. 7, consisting of two staves. The first staff begins with a treble clef, a key signature of three sharps (F#, C#, G#), and a common time signature (C). The melody starts with a quarter rest, followed by a series of notes. A dynamic marking of *pp* is placed below the first measure. A slur covers a group of notes in the fourth measure, with the word *stacc* written above it. The second staff contains a few notes, likely a bass line or accompaniment. The word *Recit* is written above the second staff, and *pp* is written below it. The piece ends with a double bar line and the word *segue.* written to the right.

No. 8

Musical notation for No. 8, consisting of two staves. The first staff begins with a treble clef, a key signature of three sharps (F#, C#, G#), and a common time signature (C). The melody starts with a quarter rest, followed by a series of notes. A dynamic marking of *pp* is placed below the first measure. A slur covers a group of notes in the fourth measure, with the word *Rit* written below it. The second staff contains a few notes, likely a bass line or accompaniment.

Viola

The Spectre Knight.

IVAN L. DAVIS,
Musical Director,
LYCEUM THEATRE,
CHICAGO, ILL.

No. 9

albr.

Handwritten musical score for Viola, No. 9, "The Spectre Knight" by Ivan L. Davis. The score is in 2/4 time with a key signature of three sharps (F#, C#, G#). It consists of seven staves of music. The first staff begins with a treble clef, a key signature of three sharps, and a 2/4 time signature. The music is written in a single melodic line. The second staff continues the melody. The third staff continues the melody. The fourth staff ends with a double bar line. The fifth staff continues the melody. The sixth staff continues the melody. The seventh staff continues the melody and ends with a double bar line. There are some markings like 'f' and 'ff' below the notes.