

Charity begins at Home Flute No II

Gou Briv
8va

2 Repeat for certain only

Vivace
8va

No 2

~~F#~~ The Pump

Andante

Handwritten musical score for 'The Pump'. The score is written on six staves. The first staff is in treble clef with a key signature of one sharp (F#) and a common time signature (C). It begins with a whole note chord (F#4, A4, C5) and a half note (F#4). The second staff is in bass clef with a 2/2 time signature, starting with a whole note chord (F#2, A2, C3) and a half note (F#2). The third staff is in bass clef with a 2/2 time signature, featuring a triplet of eighth notes (F#2, A2, C3) and a half note (F#2). The fourth staff is in bass clef with a 5/4 time signature, starting with a whole note chord (F#2, A2, C3) and a half note (F#2). The fifth staff is in bass clef with a 2/2 time signature, featuring a triplet of eighth notes (F#2, A2, C3) and a half note (F#2). The sixth staff is in bass clef with a 2/2 time signature, featuring a triplet of eighth notes (F#2, A2, C3) and a half note (F#2).

2 Verses

Flute

No 3 The Beadle

Allo pompaso & 2/4

Vice

I

II

Charity boy

No 1

Repeat ad lib

8va

Voice

8va

8va sempre

f

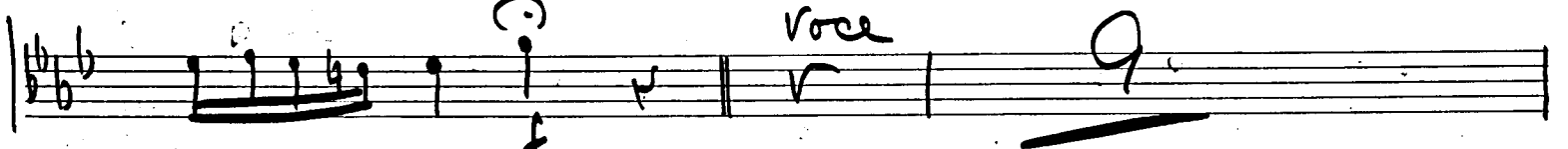
to voice

FINE

b. 6. G. out

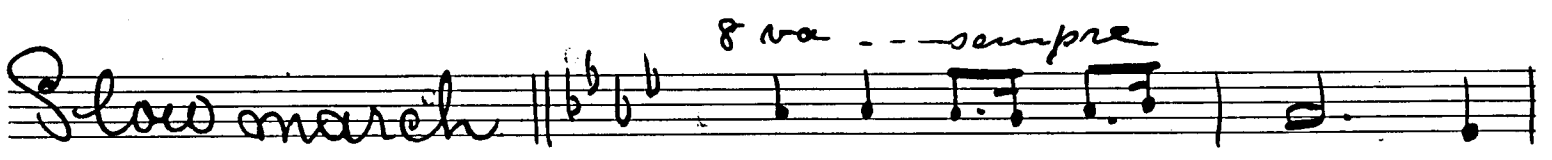
No 7 Duet

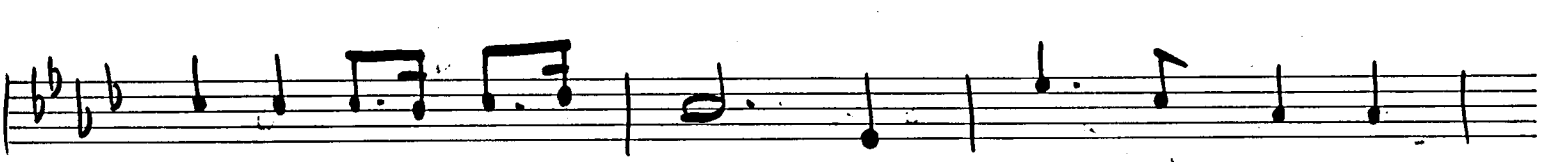
Bon Gravita 

 *voce*

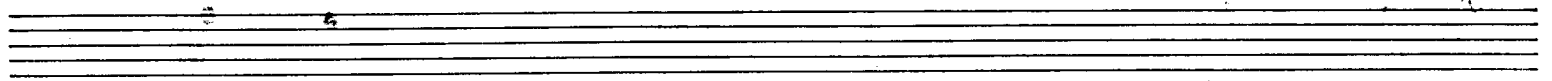


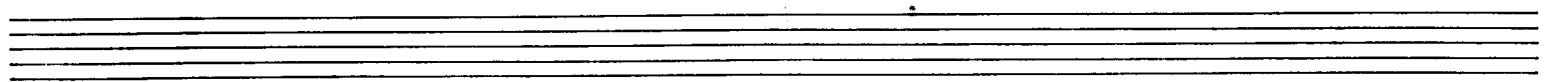


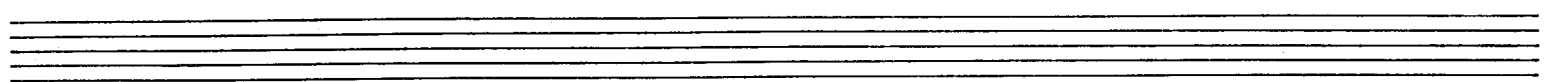
Slow march  *8 va --- sempre*

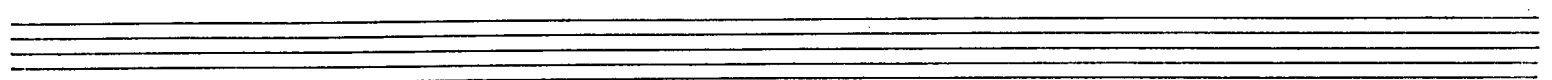










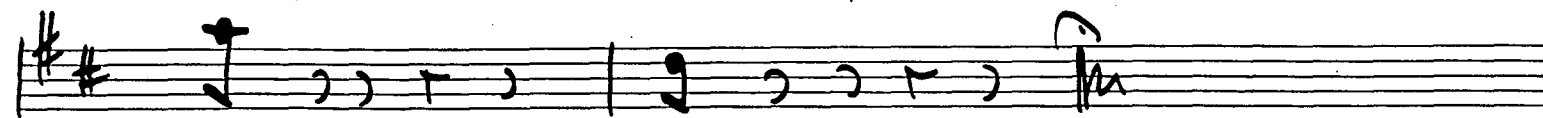
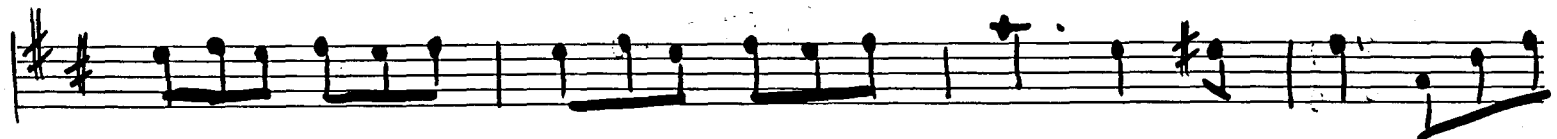
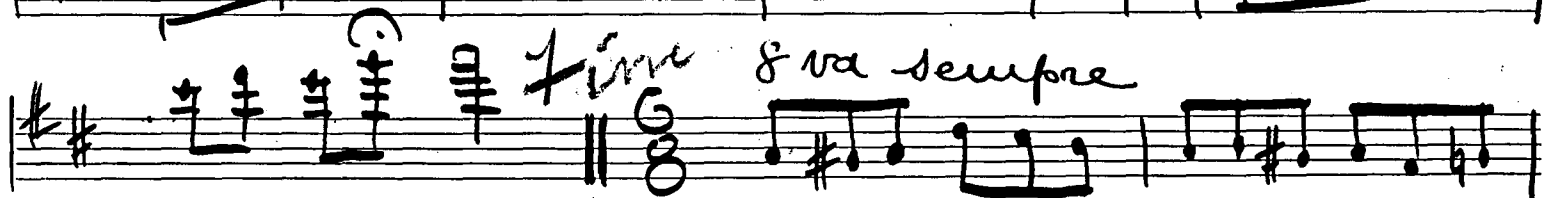
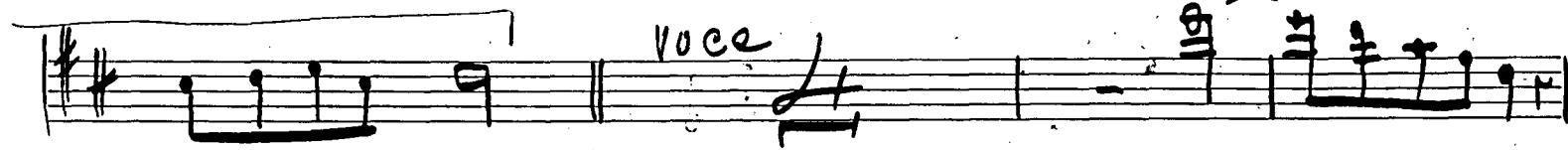


No 8

C	
M	
F	
L	

Duet

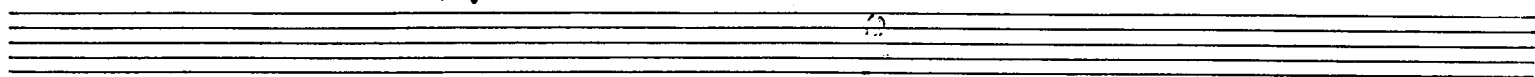
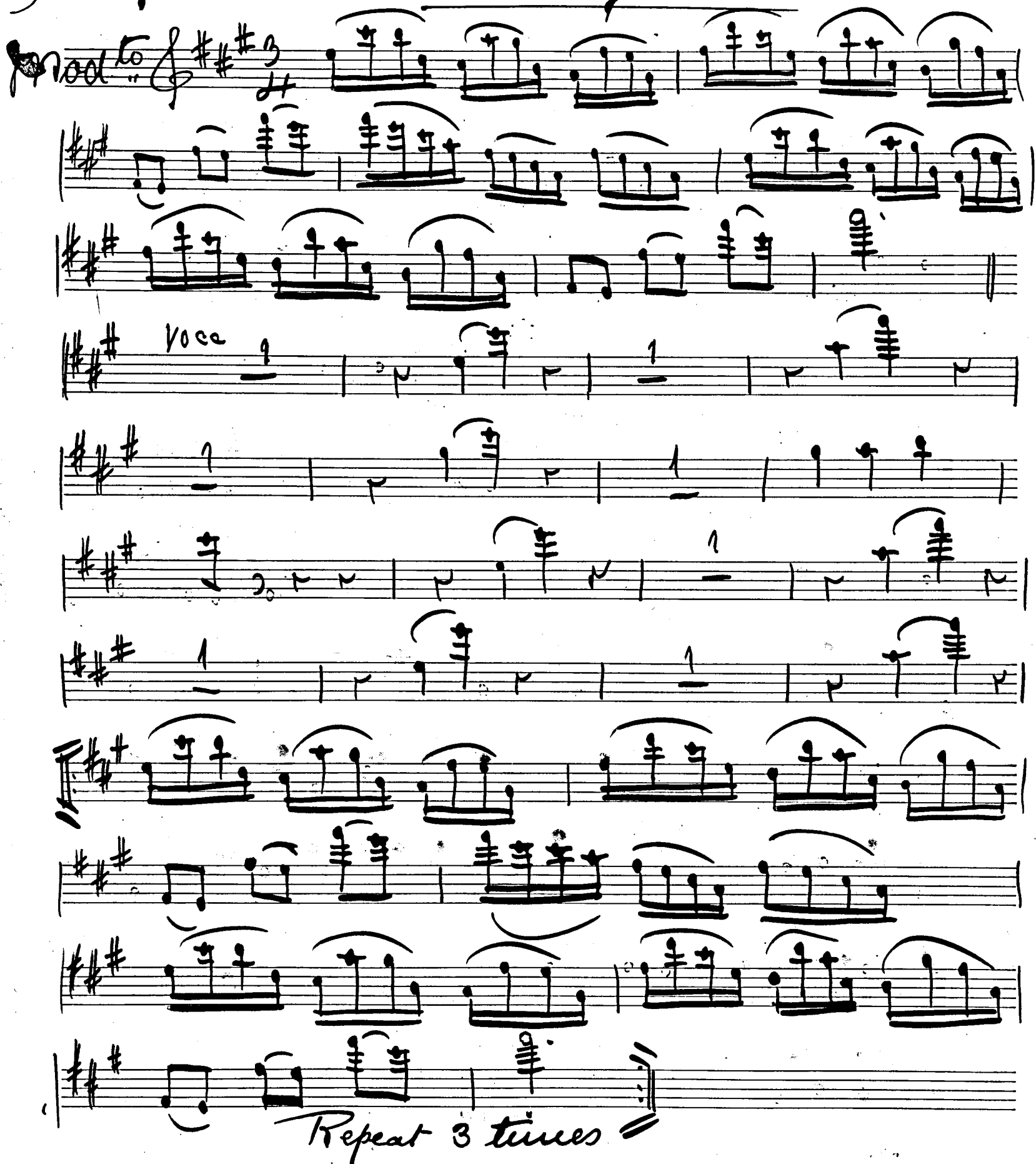
Allo mod^{co} g va



No 9 Twinkle Twinkle

Handwritten musical score for "Twinkle Twinkle" (No. 9). The score is written in treble clef with a key signature of three sharps (F#, C#, G#) and a 3/4 time signature. It includes a piano accompaniment and a vocal line.

The piano accompaniment consists of 12 staves. The first staff is labeled "Piano" and includes the key signature and time signature. The accompaniment features a melody of eighth notes with slurs and chords. The vocal line, labeled "Voce", consists of 7 staves with a simple melody of quarter notes and rests. The piano accompaniment concludes with a double bar line and the instruction "Repeat 3 times".



No 10 *Finale*

IV	10
II	11

Handwritten musical score for 'No 10 Finale'. The score is written on ten staves. The first staff begins with a treble clef, a key signature of one sharp (F#), and a 2/4 time signature. The music features various rhythmic patterns, including eighth and sixteenth notes, and rests. There are several triplets and groups of notes beamed together. The notation includes slurs, ties, and dynamic markings such as '8va' (octave up) and '4' (quarta). The piece concludes with a double bar line and a 'FINE' marking.

FINE

