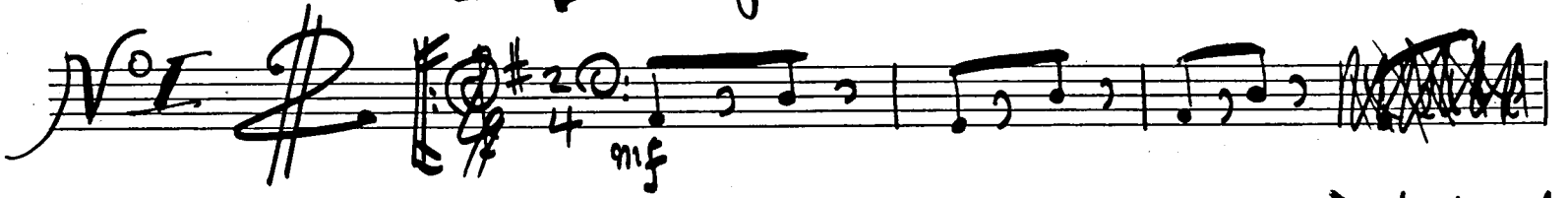


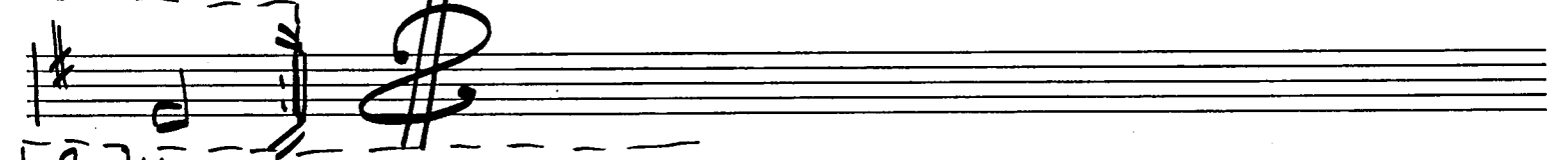
# Charity begins at Home Bassoon

*No. 1* 

 Repeat 1st time only

*Voice* 

*1st time* 



*2nd time* 


*Vivace* 











# The Pump

No 2

*Andante*  $\text{C}:\sharp$

Handwritten musical score for 'The Pump'. It consists of four staves. The first staff is the treble clef with a key signature of one sharp (F#) and a common time signature (C). The second and third staves are the bass clef. The fourth staff is the treble clef. The music features various note values, rests, and dynamic markings.

# The Beadle

No 3

*Allo pomposo*

$\text{C}:\sharp$   $\frac{2}{4}$

Handwritten musical score for 'The Beadle'. It consists of seven staves. The first staff is the treble clef with a key signature of one sharp (F#) and a 2/4 time signature. The following six staves are the bass clef. The music is characterized by a fast tempo and includes dynamic markings such as *pp*, *ff*, and *pp*.

Handwritten musical score for an instrumental piece. The top staff is a treble clef with a 2/4 time signature. The bottom staff is a bass clef with a key signature of one sharp (F#). The music includes various notes, rests, and dynamic markings like 'ff'.

No 1 *The Charity Boy*

*1st time ad lib: Between and after verses play twice* Voice

Handwritten musical score for "The Charity Boy". It features a treble clef with a key signature of one sharp (F#) and a 6/8 time signature. The score includes a vocal line and a piano accompaniment with numbered chords (2, 3, 4, 5, 6, 7, 8).

No 4 *Duet*

*lento gravita*

Handwritten musical score for "Duet". It features a treble clef with a key signature of two flats (Bb, Eb) and a 4/4 time signature. The score includes two staves of music with dynamic markings like 'p', 'pp', 'fz', and 'fz'.

*Slow march*

*p* *pp* *fz* *fz*

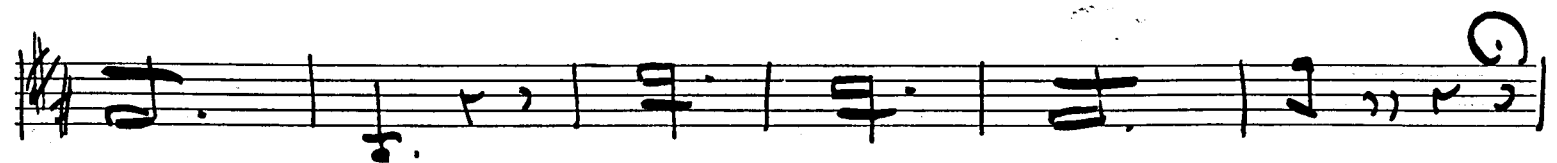
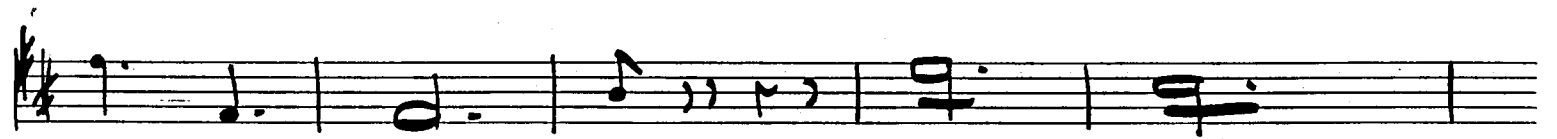
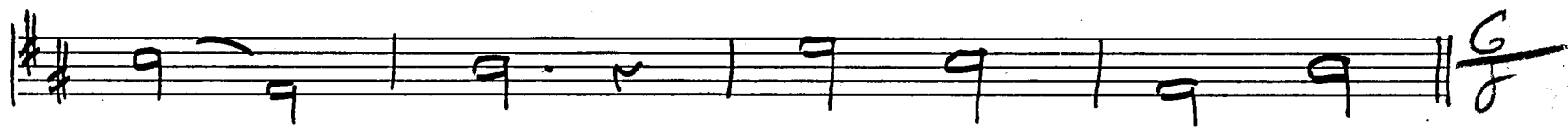
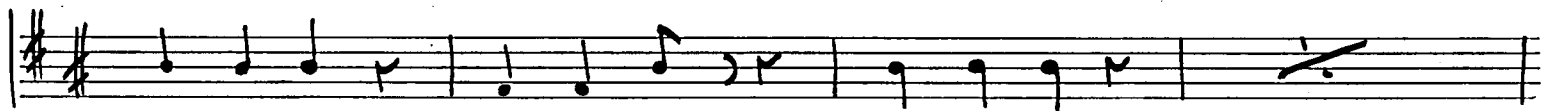
*Tag* (3)

# Multiplication Duet

Allo mod

No 8

0: # # 4/4



# Twinkle Twinkle

No 9 ②: ## 3/4

The first staff of music begins with a treble clef, a key signature of two sharps (F# and C#), and a 3/4 time signature. It contains three measures: the first measure has a quarter note on G4, the second has a quarter note on A4, and the third has a quarter note on B4.

The second staff continues the melody with three measures: a quarter note on C5, a quarter note on B4, and a quarter note on A4.

Voce 2

The third staff is labeled 'Voce' and has a '2' above the first measure. It contains three measures: a quarter note on G4, a quarter note on A4, and a quarter note on B4.

The fourth staff contains three measures: a quarter note on C5, a quarter note on B4, and a quarter note on A4.

The fifth staff contains three measures: a quarter note on G4, a quarter note on A4, and a quarter note on B4.

The sixth staff contains three measures: a quarter note on C5, a quarter note on B4, and a quarter note on A4.

The seventh staff contains three measures: a quarter note on G4, a quarter note on A4, and a quarter note on B4.

The eighth staff contains three measures: a quarter note on C5, a quarter note on B4, and a quarter note on A4.

An empty musical staff.

An empty musical staff.

An empty musical staff.

V.S.P

No 10

# Finale

A handwritten musical score for a piece titled "Finale", numbered "No 10". The score is written on ten staves. The first staff is a treble clef with a key signature of one sharp (F#) and a time signature of 2/4. The second staff is a treble clef with a key signature of one sharp (F#). The third staff is labeled "Vocce" and has a key signature of one sharp (F#) and a time signature of 15. The fourth staff is a treble clef with a key signature of one sharp (F#). The fifth staff is a treble clef with a key signature of one sharp (F#). The sixth staff is a treble clef with a key signature of one sharp (F#). The seventh staff is a treble clef with a key signature of one sharp (F#). The eighth staff is a treble clef with a key signature of one sharp (F#). The ninth staff is a treble clef with a key signature of one sharp (F#). The tenth staff is a treble clef with a key signature of one sharp (F#). The score includes various musical notations such as notes, rests, accidentals, and dynamic markings.